

85 North Grant Street, Suite B, Millersburg, OH 44654

330-674-5035

<http://www.co.holmes.oh.us/>

2015 Annual Report

Since my introduction to the public service workforce, it has been my goal to work for localized government, specifically public health. It has been a longstanding ambition of mine to get back to my roots and serve a community that will contribute to the well-being of its citizens. Growing up in Ashland Ohio, the values of community, respect, ethics, quality, and stewardship have been instilled in my core values.

As we transition from a medical based director of health to a fiscal director of health, we find challenges within our community that are being approached in a different manner. The Health District is starting to look at its operations as a business. At this time the District Health Fund has ended in the positive for two straight years. Overall, the health district finished on budget. Addressing these issues has been difficult, but with our competent work force we have been able to be good stewards of the resources we were given.



The community will see over time that I thrive in an atmosphere of challenge and excitement where my skills and education will be put to task. You will find the Holmes County Health District staff are very dedicated and are driven professionals that have been commended by various organizations for a keen ability to manage, and the capability to prepare and transition to the next phase of public health. The challenges, as we see in front of us, are becoming accredited and working more collaboratively with our agency partners.

I am excited for the future The Holmes County Board of Health has given me and our community to be innovators in the field of public health. I seek to carry out the Mission of Holmes County General Health District by "Working with our community to protect and improve the health and environment of those who live, work, and play in Holmes County".

The Holmes County General Health District is devoted to improving the health and well-being of Holmes county and offers the following services to the community:

Personal Health Services

Reproductive Health & Wellness: Contraceptive counseling, sexually transmitted infection testing, and treatment.

School Health Services: Hearing, vision, scoliosis screenings and health resources for teachers and parents.

Public Health Nursing: Consultations and disaster preparedness training.

Bureau of Children with Medical Handicaps (BCMh): Services for children with medical disabilities.

Communicable Disease: Case investigation, education, tuberculosis testing, and follow up.

Immunization Clinics: Offsite locations throughout Holmes County.

Help Me Grow: Home visiting for children 0-3 years to provide parents with education and coordination of services.

Breastfeeding Resource Center: Education, counseling, support and equipment for sale or rent to help mothers successfully breastfeed.

Women, Infants, & Children (WIC): Nutrition education and supplemental food program for pregnant/breastfeeding women and children 0-5 years.

Ohio Buckles Buckeyes (OBB): Child passenger safety training for community members and car seats for parents who meet income criteria.

Injury Prevention: Coordinate programming for seniors and build relationships with agencies servicing seniors in an effort to prevent falls.

Small Health Care Provider Quality Improvement: Builds capacity among primary care practices to monitor care provided to patients

Environmental Health

Food Protection: Licensing/ inspection of food service operations and retail food establishments to prevent food-borne illnesses.

Sewage Treatment: Site reviews and permits to install/operate sewage treatment systems.

Water: Site reviews for new/alterd wells, bacteriological and chemical analysis of water samples for new and existing wells.

Recreational Sanitation: Licensing/inspections of RV parks and camps, public swimming pools and spas.

Rabies Control: Investigations of animal bites, enforcement of quarantines, and rabies surveillance.

Nuisance Abatement: Investigation of public health nuisance complaints, issue abatement orders, compliance monitoring.

Vector control: Surveillance of mosquito activity, collection of mosquitoes/ticks for testing, and mosquito spraying/larvaciding.

Solid Waste: Licensing/inspections of solid waste facilities.

Housing: Loan approval inspections of water and sewage treatment systems.

Public Health Emergency Preparedness: Development of plans and procedures for responding to public health emergencies.

Vital Statistics

Maintaining accurate records of all births and deaths that occur in Holmes County. Issue birth certificates for anyone born in Ohio and death certificates for persons who passed away in Holmes County.

2015 By The Numbers

Expenses

Salaries	\$974,939.04
Other Expenses*	\$304,320.29
Fringes	\$256,562.99
Supplies / Office	\$148,524.89
Contracts	\$78,548.02
Office Space	\$56,060.99
Travel / Conference	\$18,476.54
Equipment	\$14,960.75
Total	\$1,852,393.51

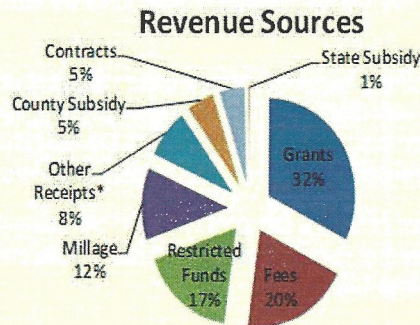
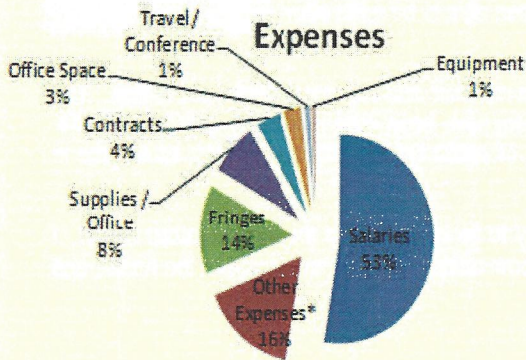
Revenue Sources

Grants	\$571,577.02
Fees	\$349,130.05
Restricted Funds	\$306,979.48
Millage	\$211,038.74
Other Receipts*	\$144,345.40
County Subsidy	\$89,999.99
Contracts	\$82,508.11
State Subsidy	\$7,897.73
Total Revenue	\$1,763,475.78

Program Grants Total

\$571,577.02

WIC (Women, Infants, & Children)	165,565.60
Help Me Grow	87,359.97
Small Health Care	75,327.00
Injury Prevention	66,191.57
Public Health Infrastructure	58,021.00
Immunization Action Plan	42,227.30
RHWP (Reproductive Health & Wellness Program)	64,419.00
Child & Family Health	8,965.58
Medical Reserve Corps	3,500.00



Follow us on
Facebook



Request for Community Input

The Holmes County Community Health Assessment and Community Health Improvement Plan can be found in its entirety at on our website at <http://www.co.holmes.oh.us/health/>. Holmes County residents are encouraged to leave feedback regarding these documents, as community input is very important to pursuing excellence in public health. Directions on how to leave feedback can be found on the website.

2015 STATISTICS

ENVIRONMENTAL HEALTH

Nuisance Abatement

Nuisances Reported	18
Number Requiring Action	5
Nuisances Abated	13

Sewage Program

Site Reviews	39
Permits Issued	117
Permit-to-alter Issued	23
Small Flow Site Reviews	3
Household Sewage Inspections	741
Semi-public Sewage Inspections	253
Small Flow Inspections	158
Consultations	1,060

Rabies Control

Animal Bites Reported	24
-----------------------	----

Food Protection Program

Licenses Issued	380
Inspections	585

Water Program

Permit to Install	83
Total Inspections	145
Consultations	236

BCMh (Bureau of Medically Handicapped Children)

Average Monthly Caseload	161
--------------------------	-----

HELP ME GROW PROGRAM

Families Referred	119
Total Visits	540
Average Monthly Caseload	57

SCHOOL HEALTH

Students Screened	181
Consultations	720
Classroom Presentations	294

COMMUNITY HEALTH EDUCATION

Presentations	72
People Reached	2,283

IMMUNIZATION PROGRAM

Immunizations Given	4,160
---------------------	-------

COMMUNICABLE DISEASES

Reported Communicable Diseases	134
--------------------------------	-----

VITAL STATISTICS

Holmes County Births	665
Hospital Births	585
Home Births	80
Out of County Births	379
Deaths Recorded	290
Fetal Deaths	7
Deaths under 18	4
Trauma Death	12

Certified Copies Issued

Birth Certificates	1,931
Death Certificates	787

Leading Cause of Death

Cardio Vascular Disease	94
Cancer	49
Dementia	26
Pneumonia	25
Stroke	20
Other Respiratory Disease	20
Kidney Disease	11
Accidental Injury	11
Diabetes	5
Suicide	3